

Introduction: Diamond Alkali Superfund Site and Riverside Industrial Superfund Site

4/21/2025

Diamond Alkali Superfund Site:

Large and complex site, so EPA divided it into 4 parts that we call “Operable Units” or OUs.

80-120 Lister Avenue (Operable Unit 1):

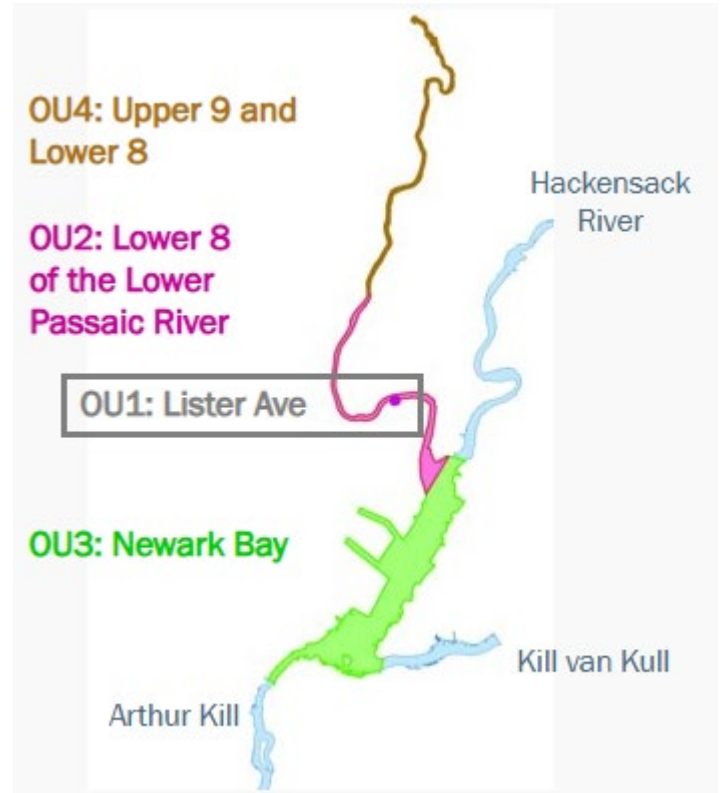
- Former pesticides and herbicides manufacturer that discharged dioxin and DDT into the river.
- EPA selected an interim cleanup plan in 1987 that was implemented in 2001.
- EPA selected a final cleanup plan in January 2025.

Lower 8.3 miles of the Lower Passaic River (Operable Unit 2):

- Extends from the river’s mouth at Newark Bay to the Newark-Belleville line
- EPA selected a final cleanup plan in 2016 that calls for:
 - A cap on the bottom of the river, bank-to-bank, to isolate the contaminated sediment from the rest of the river ecosystem.
 - Some dredging before the cap is laid down to make room for the cap and to accommodate a commercial navigation channel in 1.7 miles closest to Newark Bay.
 - Transporting the sediment dredged out of the river to a processing facility to be built next to the PVSC sewage treatment plant in Newark.
 - Squeezing the sediment dry and transporting it to permitted landfills elsewhere in the U.S.
- Occidental Chemical-Glenn Springs completed the design, which works out the engineering details of how to carry out the cleanup plan, and EPA approved it in May 2024.
- EPA is negotiating agreements with potentially responsible parties for them to do the cleanup work under EPA oversight.

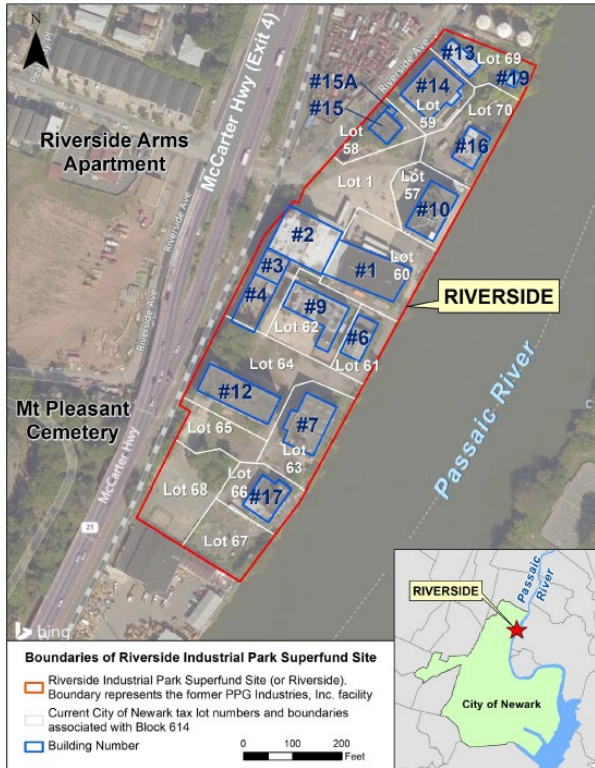
17-Mile Lower Passaic River, focusing on Upper 9 Miles (Operable Unit 4):

- Extends from the river’s mouth at Newark Bay to Dundee Dam in Garfield.
- Includes the lower 8.3-mile cleanup and an upper 9-mile interim cleanup plan that EPA selected in 2021
- Unlike the lower 8.3-mile cleanup plan which is bank-to-bank, the upper 9-mile interim cleanup plan calls for dredging and capping source areas of dioxin and PCBs.
- Occidental Chemical-Glenn Springs started the design in 2023.



Newark Bay (Operable Unit 3):

- Newark Bay is in the study phase.
- The Remedial Investigation, which describes the nature and extent of contamination in the bay, was approved by EPA in 2022.
- Occidental Chemical-Glenn Springs is working on the Feasibility Study, which lays out options for a cleanup plan. EPA expects that to be submitted later this year.



Riverside Industrial Park Superfund Site

- This is a separate Superfund Site on the western bank of the Lower Passaic River, in Newark’s North Ward.
- 7.6-acre industrial and commercial complex.
- EPA selected a final cleanup plan for Riverside in 2021 and in 2024 EPA completed negotiations with PPG to do the design and construction of the remedy.
- PPG is currently performing the design.

The Superfund Process

