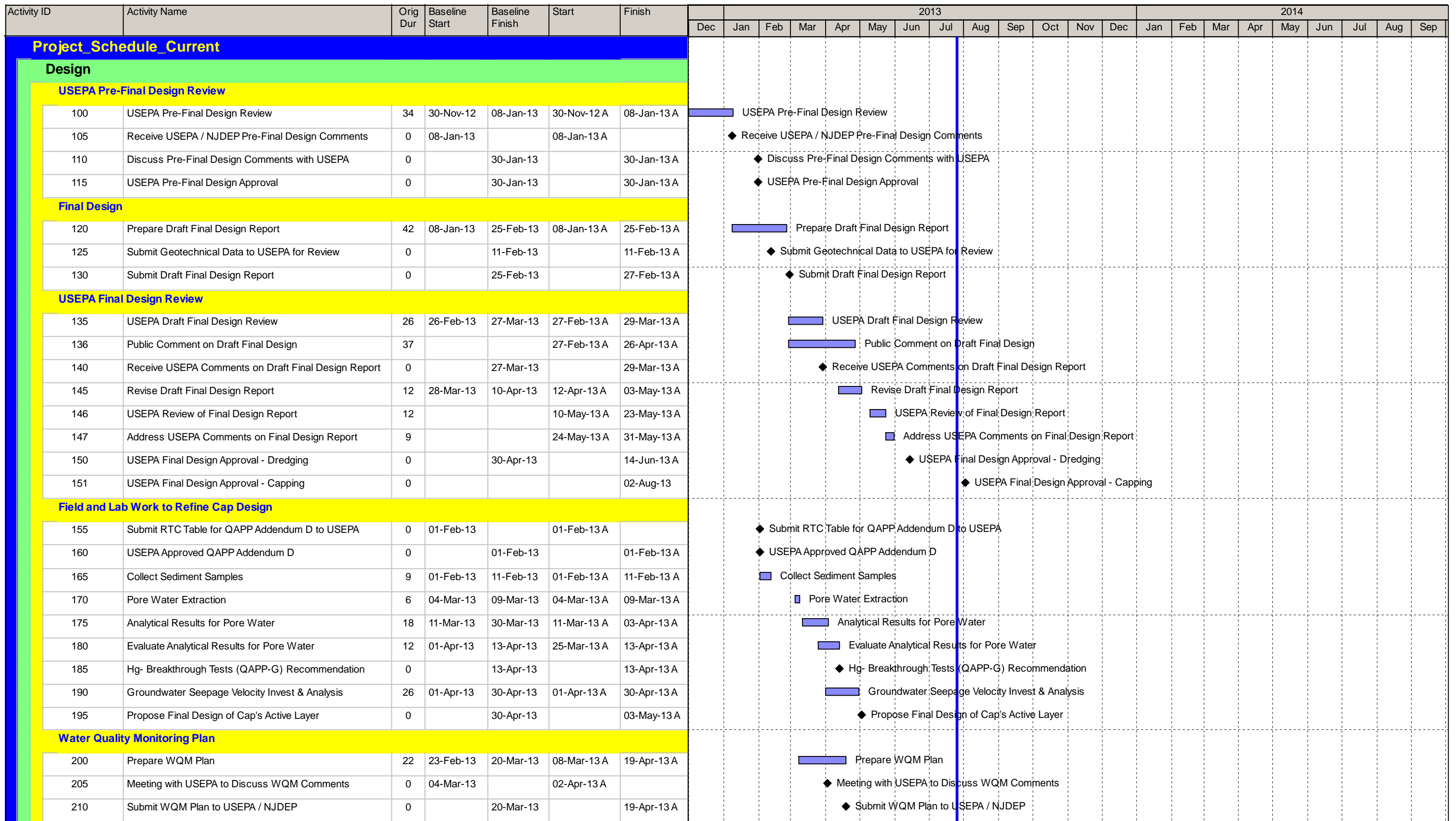


Appendix K
Project Schedule



■ Remaining Level of Effort ■ Critical Remaining Work
■ Actual Level of Effort ◆ Milestone
■ Actual Work
■ Remaining Work

436870 / 474468 Lower Passaic River Project
 CH2M Schedule

Page 1 of 5

Project_Schedule_Current
 Layout: Attachment: Project Schedule
 Filter(s): TASK filter: All Activities
 Start Date: 29-Nov-12
 FinishDate: 04-Apr-14
 Data Date: 26-Jul-13
 Run Date: 31-Jul-13

Activity ID	Activity Name	Orig Dur	Baseline Start	Baseline Finish	Start	Finish	2013												2014							
							Dec	Jan	Feb	Mar	Apr	May	Jun	Jul	Aug	Sep	Oct	Nov	Dec	Jan	Feb	Mar	Apr	May	Jun	Jul
Bench Scale S/S Testing - Stabilization Facility																										
Prepare Work Plan																										
570	Discuss S/S Testing with facilities	0	09-Jan-13		09-Jan-13 A		◆ Discuss S/S Testing with facilities																			
575	Facilities Prepare S/S Testing Work Plans	11	09-Jan-13	21-Jan-13	09-Jan-13 A	21-Jan-13 A	■ Facilities Prepare S/S Testing Work Plans																			
580	CH2M HILL Review / Comment on S/S Testing Work Plans	2	22-Jan-13	23-Jan-13	22-Jan-13 A	23-Jan-13 A	■ CH2M HILL Review / Comment on S/S Testing Work Plans																			
585	Submit S/S Testing Work Plans to NJDEP for Review	0		11-Feb-13		11-Feb-13 A	◆ Submit S/S Testing Work Plans to NJDEP for Review																			
590	NJDEP Review of S/S Testing Work Plans	15	12-Feb-13	28-Feb-13	12-Feb-13 A	28-Feb-13 A	■ NJDEP Review of S/S Testing Work Plans																			
595	Revise S/S Testing Work Plan	2	01-Mar-13	02-Mar-13	28-Feb-13 A	28-Feb-13 A	■ Revise S/S Testing Work Plan																			
600	NJDEP Accepted S/S Work Plan Approach	0		02-Mar-13		28-Feb-13 A	◆ NJDEP Accepted S/S Work Plan Approach																			
Bench Scale Testing																										
605	Conduct Bench Scale Testing	5	04-Mar-13	16-Mar-13	18-Mar-13 A	21-Mar-13 A	■ Conduct Bench Scale Testing																			
610	Receive TCLP Analytical Results on Bench Scale Testing (Quick TAT)	18	18-Mar-13	06-Apr-13	22-Mar-13 A	12-Apr-13 A	■ Receive TCLP Analytical Results on Bench Scale Testing (Quick TAT)																			
615	Summary Report for Bench Scale Testing	5	08-Apr-13	12-Apr-13	11-Apr-13 A	12-Apr-13 A	■ Summary Report for Bench Scale Testing																			
Permit Equivalency Applications																										
620	Initial Meeting With NJDEP	0	29-Nov-12		29-Nov-12 A		◆ Initial Meeting With NJDEP																			
625	Call with NJDEP	0		06-Feb-13		06-Feb-13 A	◆ Call with NJDEP																			
CPG																										
Dredging PTE																										
630	Prepare Potential To Emit (PTE) Calculations - Dredging	9	10-Dec-12	19-Dec-12	10-Dec-12 A	19-Dec-12 A	■ Prepare Potential To Emit (PTE) Calculations - Dredging																			
635	Submit PTE Calculations to NJDEP - Dredging	0		19-Dec-12		19-Dec-12 A	◆ Submit PTE Calculations to NJDEP - Dredging																			
640	NJDEP Review of PTE - Dredging	1	20-Dec-12	20-Dec-12	20-Dec-12 A	20-Dec-12 A	■ NJDEP Review of PTE - Dredging																			
645	Respond to NJDEP Comments on PTE - Dredging	21	21-Dec-12	14-Jan-13	21-Dec-12 A	14-Jan-13 A	■ Respond to NJDEP Comments on PTE - Dredging																			
650	NJDEP Acceptance of PTE - Dredging	0		28-Feb-13		19-Apr-13 A	◆ NJDEP Acceptance of PTE - Dredging																			
Waterfront Development Permit																										
655	Prepare WFD Permit Equivalency Package	68	29-Nov-12	15-Feb-13	29-Nov-12 A	22-Feb-13 A	■ Prepare WFD Permit Equivalency Package																			
660	Submit WFD Permit Equivalency Package to NJDEP	0		22-Feb-13		22-Feb-13 A	◆ Submit WFD Permit Equivalency Package to NJDEP																			
665	Distribute Notification and Permission Letters for WFD Permit	0		22-Feb-13		22-Feb-13 A	◆ Distribute Notification and Permission Letters for WFD Permit																			
670	Review Status Meeting with NJDEP - WFD Permit	0		15-Mar-13		05-Apr-13 A	◆ Review Status Meeting with NJDEP - WFD Permit																			
NJDEP Review & Approval																										
675	Completeness Determination - WFD Permit	24	23-Feb-13	22-Mar-13	25-Feb-13 A	22-Mar-13 A	■ Completeness Determination - WFD Permit																			
680	Conditional Approval of WFD Permit	0		22-Mar-13		26-Apr-13 A	◆ Conditional Approval of WFD Permit																			
685	Receive AUD in Support of WFD Permit	0		07-May-13		27-Jun-13 A	◆ Receive AUD in Support of WFD Permit																			
690	Final Approval of WFD Permit	0		07-May-13		02-Aug-13	◆ Final Approval of WFD Permit																			

■ Remaining Level of Effort ■ Critical Remaining Work
■ Actual Level of Effort ◆ ◆ Milestone
■ Actual Work
■ Remaining Work

